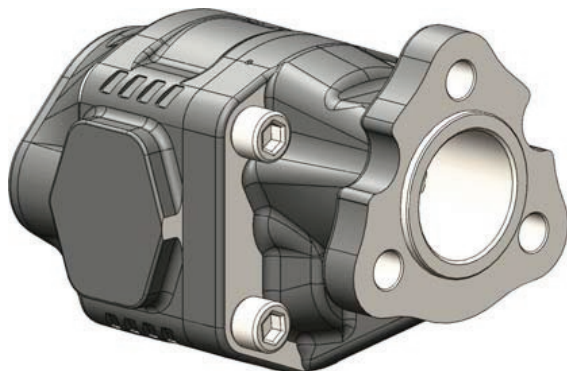


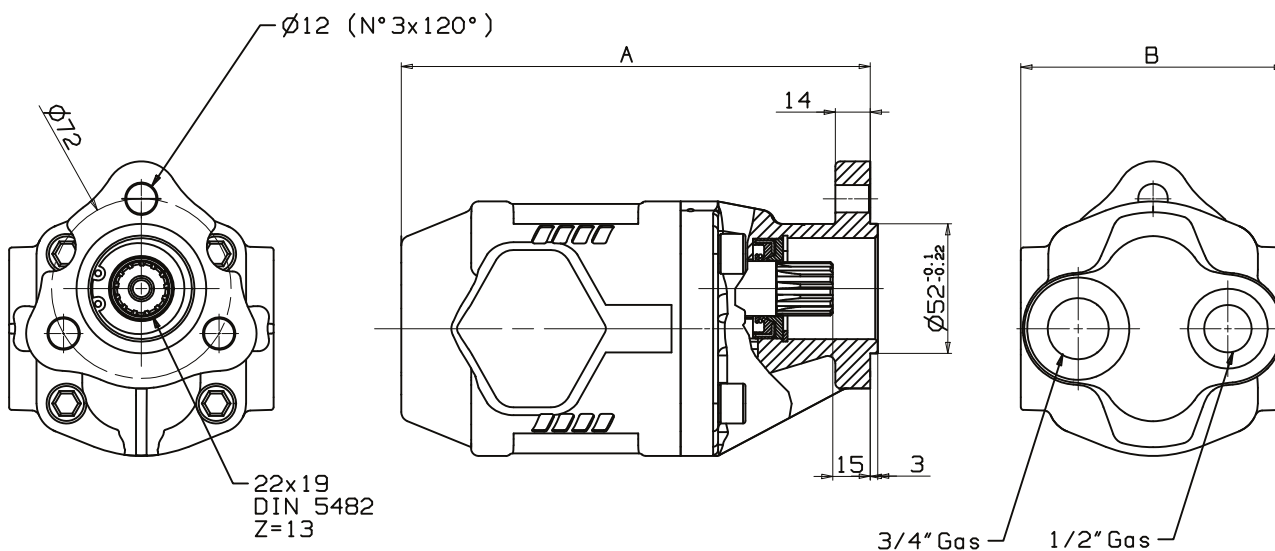
LIGHT-DUTY GEAR PUMPS



NPLA DIN



Fluid	Mineral or synthetic compatible with the following seals: NBR, FKM, FPM, NYLON				
Kinematic viscosity suggested	Average ambient temp. (°C)	< -10	-10 ÷ 10	10 ÷ 35	> 35
	VG (cSt = mm ² /s)	22	32	46	68
Optimal kinematic viscosity		VG = 10 cSt / 100 cSt			
Max kinematic viscosity suggested at start-up		VG = 750 cSt			
Viscosity index suggested	VI > 100	Working temperature -15°C + 100°C			
Oil Filtering		> 200 bar: 10 µm < 200 bar: 25 µm			
Inlet pressure		-0.3 ÷ 2 bar			
Pump Rotation		Unidirectional			



PUMP TYPE	ROTATION		IN ISO 228	OUT ISO 228	A mm	B mm	WEIGHT Kg
	RIGHT	LEFT					
NPLA-06	105.003.00078	105.003.00069	G 3/4"	G 1/2"	132	98	5
NPLA-10	105.003.00111	105.003.00102			138		5.2
NPLA-16	105.003.00175	105.003.00166			147.5	102	5.6
NPLA-20	105.003.00219	105.003.00200			154		5.9
NPLA-25	105.003.00264	105.003.00255			162		6.5
NPLA-32	105.003.00335	105.003.00326			173		7
NPLA-40	105.003.00415	105.003.00406			188		106

NPLA DIN_21 Specifications subject to change without notice.

PHONE: 1300 300 375

transporteng.com.au info@transporteng.com.au



MELBOURNE • SYDNEY • BRISBANE • PERTH • ADELAIDE

NPLA DIN

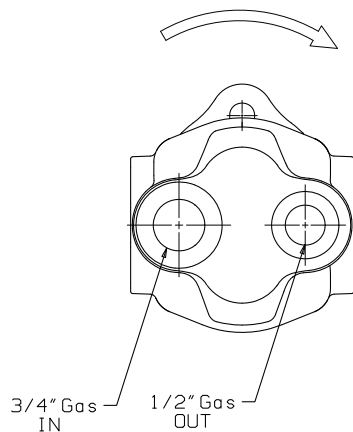
Technical Features

PUMP TYPE	DISPLACEMENT cm ³ /rev	PRESSURE (BAR)			MAX. CONTINUOUS SPEED (rpm)	MAX. INTERMITTENT SPEED (rpm)	MIN. SPEED (rpm)
		P1	P2	P3			
NPLA-06	6.3	200	220	240	2200	3000	300
NPLA-10	10.062						
NPLA-16	16.035						
NPLA-20	20.123						
NPLA-25	25.154						
NPLA-32	32.042	180	200	220	2000	2800	
NPLA-40	39.933	150	170	190	1800	124	

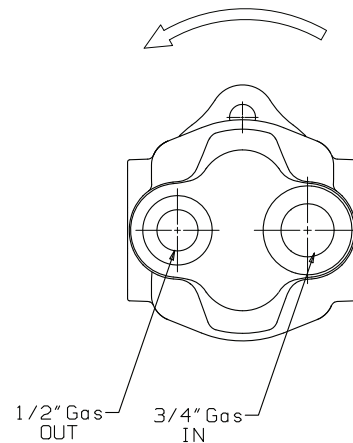
P1= Max continuous pressure (100%) **P2**= Max. Intermittent pressure (20 sec.max.) **P3**=Max. peak pressure (6 sec. max.)

Suction/Delivery Identification:

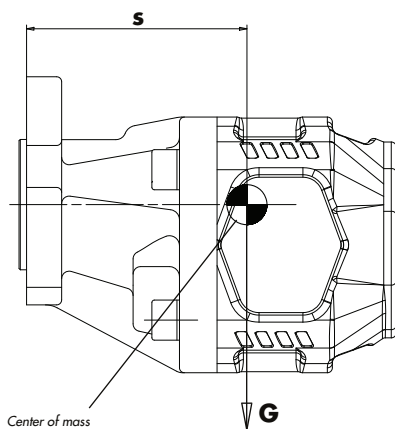
Anti-clockwise rotation, left pump



Clockwise rotation, right pump



Mass moment



$$M_{\text{amm.}} = s \times G \text{ (Nm)}$$

G=Weight in N (Weight in Kg x 9.81)

PUMP TYPE	S
NPLA-06	82.5
NPLA-10	83
NPLA-12	84
NPLA-14	85.5
NPLA-16	87
NPLA-20	91
NPLA-25	93
NPLA-32	102
NPLA-40	108

NPLA DIN_21 Specifications subject to change without notice.

PHONE: 1300 300 375

transporteng.com.au info@transporteng.com.au

A Sime Darby Motors Company