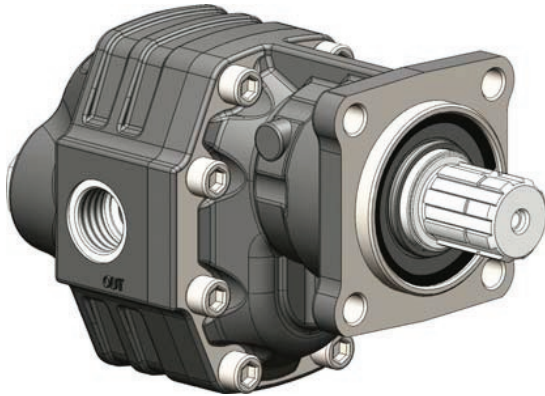


TIPPER GEAR PUMPS – BI ROTATIONAL - 4 BOLT ISO



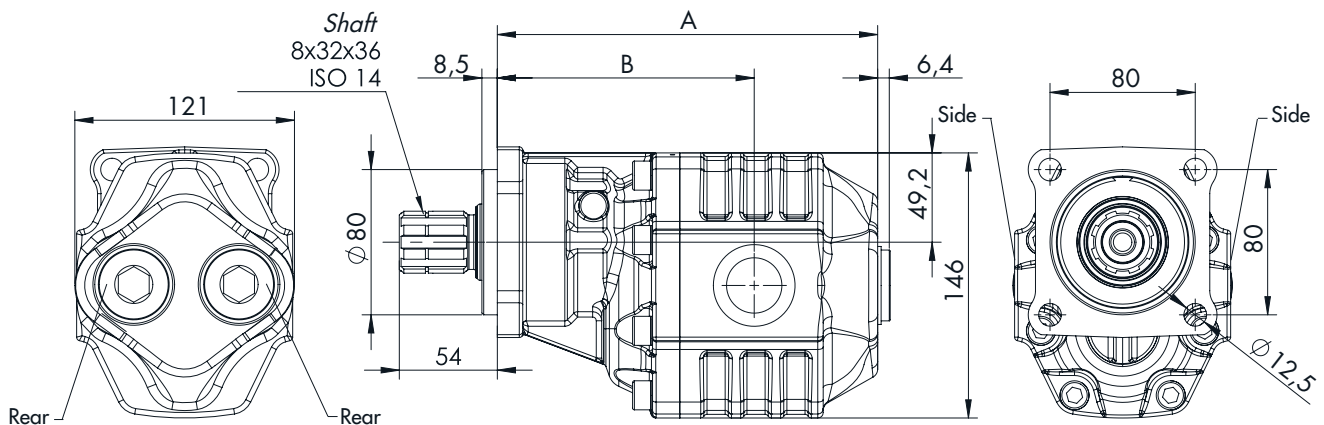
DTH SLIM ISO



Fluid	Mineral or synthetic compatible with the following seals: NBR, FKM, FPM, NYLON				
Kinematic viscosity suggested	Average ambient temp. (°C)	< -10	-10 ÷ 10	10 ÷ 35	> 35
	VG (cSt = mm ² /s)	22	32	46	68
Optimal kinematic viscosity			VG = 10 cSt / 100 cSt		
Max kinematic viscosity suggested at start-up			VG = 750 cSt		
Viscosity index suggested		VI > 100	Working temperature -15°C + 100°C		
Oil Filtering		> 200 bar: 10 µm < 200 bar: 25 µm			
Inlet pressure		-0.3 ÷ 2 bar			
Pump Rotation		Bidirectional			

OMFB Bi-rotational Pumps suit tipper applications in 61cc and 82cc

- Light and Compact in size with optional rear ports
- Available in both ISO 4 Bolt and UNI 3 Bolt mounts



MODEL/CODE	DESCRIPTION	PORTS		A mm	B mm	WEIGHT kg
		IN BSPP	OUT BSPP			
DTHI61	OMFB tipper gear pump kit ISO 61L bi-rotational	1"		196.5	136.5	13.2
DTHI82	OMFB tipper gear pump kit ISO 82L bi-rotational			209.5	141.5	15.8

DTH_SLIM_ISO Specifications subject to change without notice.

PHONE: 1300 300 375

transporteng.com.au info@transporteng.com.au



MELBOURNE • SYDNEY • BRISBANE • PERTH • ADELAIDE

TIPPER GEAR PUMPS – BI ROTATIONAL - 4 BOLT ISO



DTH SLIM ISO

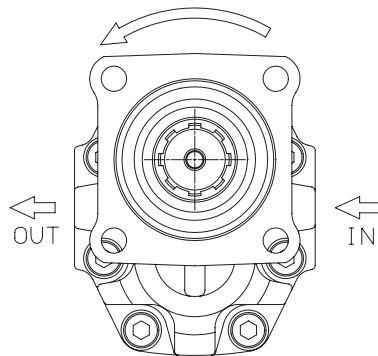
Technical Features

MODEL/CODE	DISPLACEMENT cm ³ /rev	PRESSURE			MAX. CONTINUOUS SPEED rpm	MAX. INTERMITTENT SPEED rpm	MIN. SPEED rpm
		P1 bar	P2 bar	P3 bar			
DTHI61	60.06	205	225	230	1900	2500	300
DTHI82	81.08	205	225	230	1900	2500	

- P1 = Maximum continuous pressure (100%)
- P2 = Maximum intermittent pressure (20 seconds maximum)
- P3 = Maximum peak pressure (6 seconds maximum)

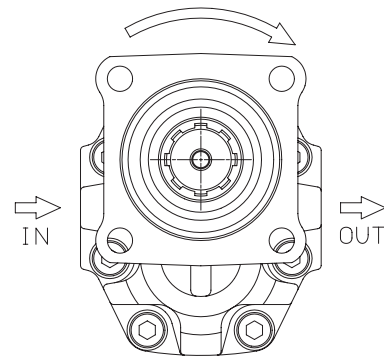
Suction/Delivery Identification

Anti-clockwise (left hand) rotation



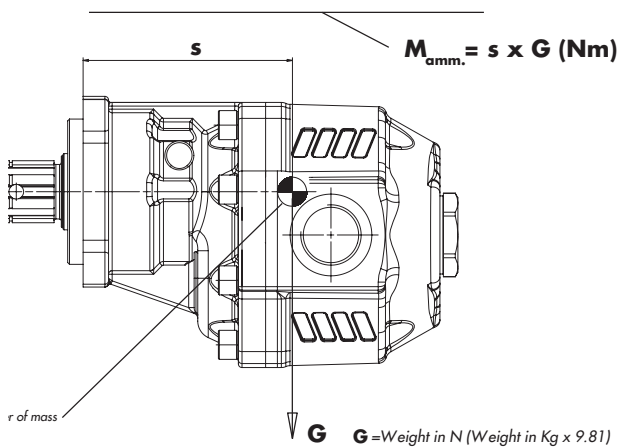
FRONT

Clockwise (right hand) rotation



FRONT

MASS MOMENT



PUMP TYPE	S
DTHI61	99
DTHI82	107

DTH_SLIM_ISO Specifications subject to change without notice.

PHONE: 1300 300 375

transporteng.com.au info@transporteng.com.au



MELBOURNE • SYDNEY • BRISBANE • PERTH • ADELAIDE