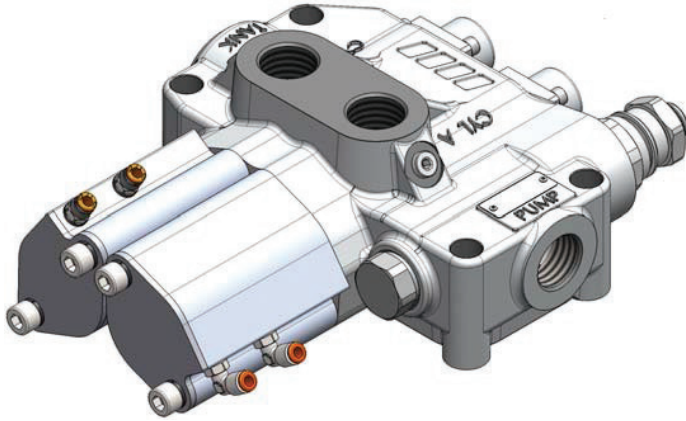


TWIN TIPPING VALVE



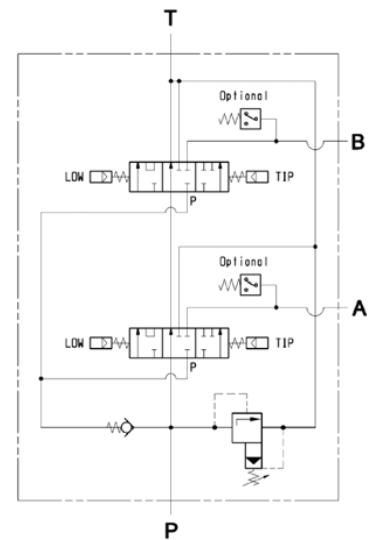
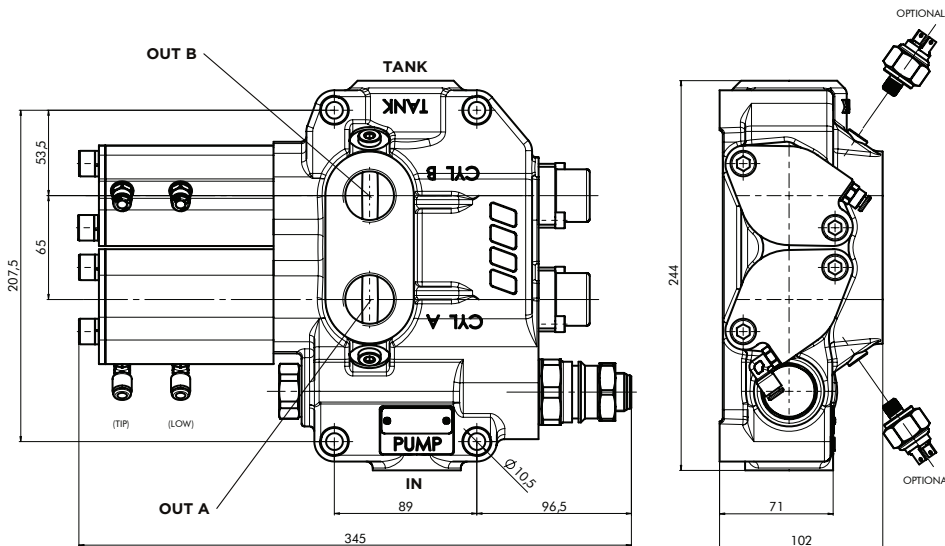
1" 250LPM Truck & Trailer Valve 121.15.104



- 150 bar relief valve
- Nodular cast-iron body for pressure up to 400 bar.
- Guaranteed for oil temperature range -15+110 °C, viscosity range 12/100 cSt and oil filtering 25 Qm.
- Galvanized body and nickel spool.

Dimensions

Functional diagram



TIPPING VALVE TYPE	ORDER CODE	IN	TANK	OUT	WEIGHT (Kg)
		ISO 228	ISO 228	ISO 228	
DM 250 CE	121.15.104	G1	G1-1/4	G1	16.9

Specifications are subject to change without notice

10/11/23

PHONE: 1300 300 375

transporteng.com.au info@transporteng.com.au



MELBOURNE • SYDNEY • BRISBANE • PERTH • ADELAIDE

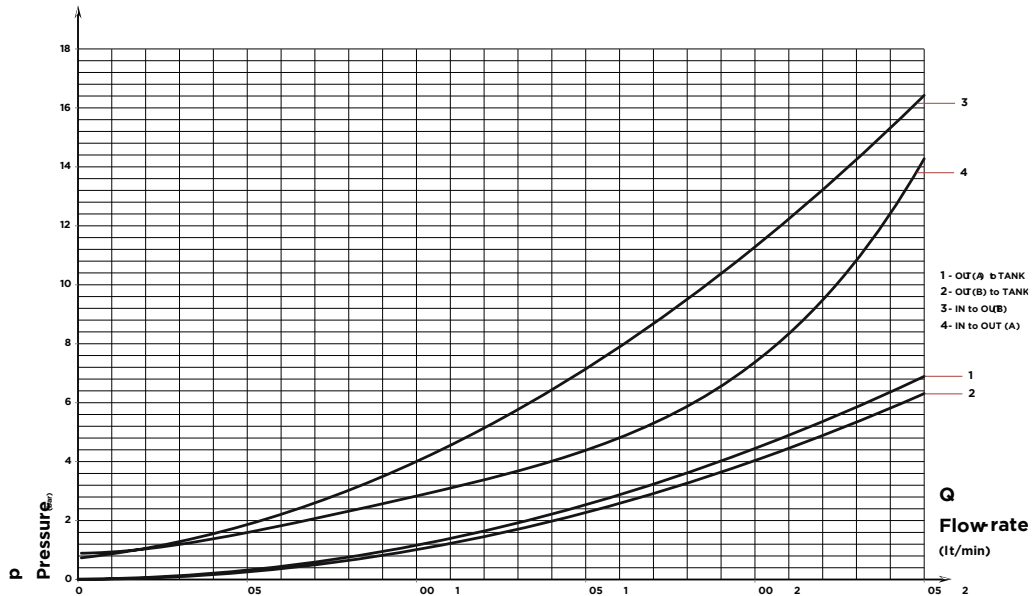
TWIN TIPPING VALVE



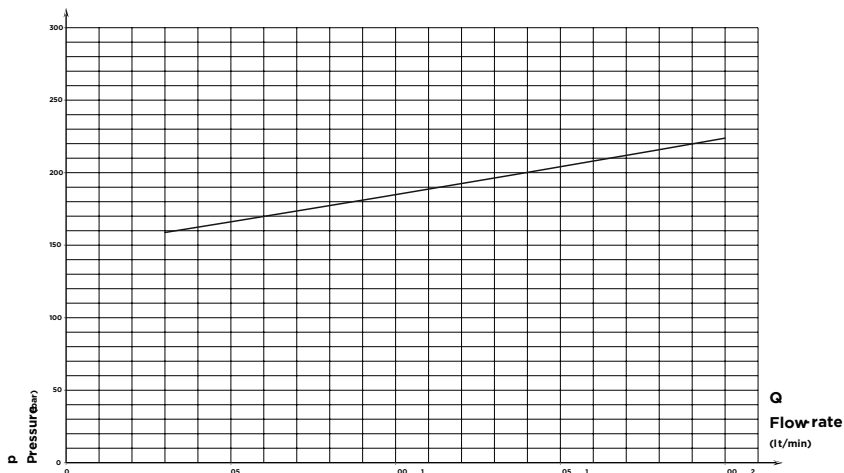
1" 250LPM Truck & Trailer Valve 121.15.104

TIPPING VALVE TYPE	ORDER CODE	PRESSURE VALUES (bar)		FLOW (L/MIN)
		STANDARD SETTING	MAX SETTING	
DM 250CE	121.15.104	140	300	250

TIPPING VALVE PRESSURE DROP



P-Q OPERATING CURVE FOR PRESSURE RELIEF VALVES



The graph refers to oil type ISO VG46 a 40°

Specifications are subject to change without notice

10/11/23

PHONE: 1300 300 375

transporteng.com.au info@transporteng.com.au

