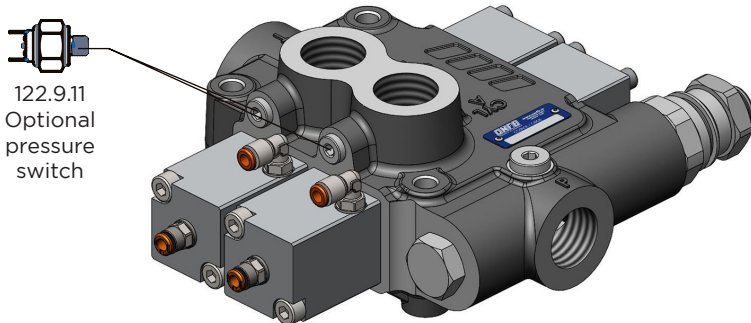


# TWIN TIPPING VALVE

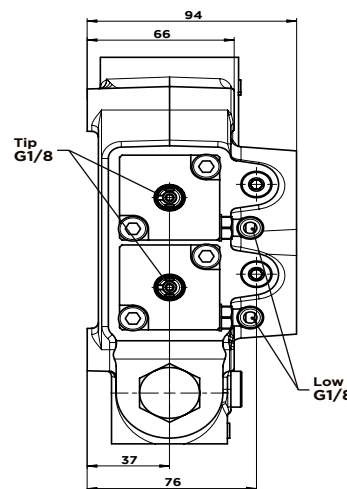
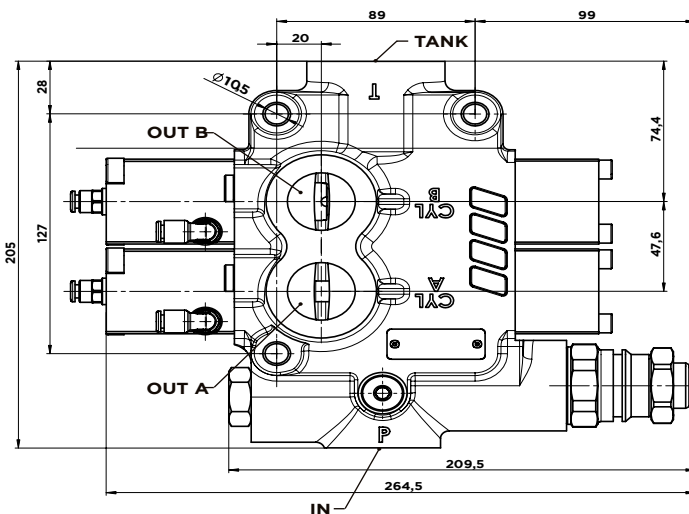


## 1" 160LPM Truck & Trailer Valve 121.15.113

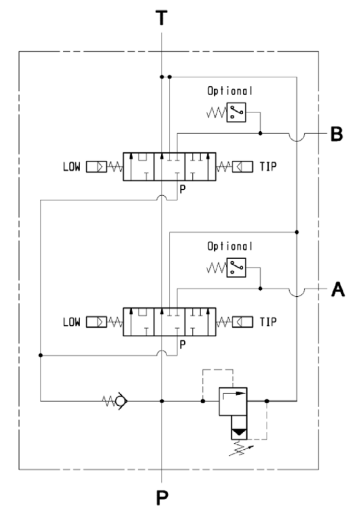


- 150 bar relief valve
- Nodular cast-iron body for pressure up to 400 bar
- Galvanized body and nickel spool
- Guaranteed for oil temperature range -15+110 °C, viscosity range 12/100 cSt and oil filtering 25 Qm

### Dimensions



### Functional diagram



TIPPING VALVE TYPE	ORDER CODE	IN	TANK	OUT	WEIGHT (Kg)
		ISO 228	ISO 228	ISO 228	
DM-160	121.15.113	G1	G1-1/4	G1	10

Specifications are subject to change without notice

10/11/23

**PHONE: 1300 300 375**

transporteng.com.au info@transporteng.com.au



MELBOURNE • SYDNEY • BRISBANE • PERTH • ADELAIDE

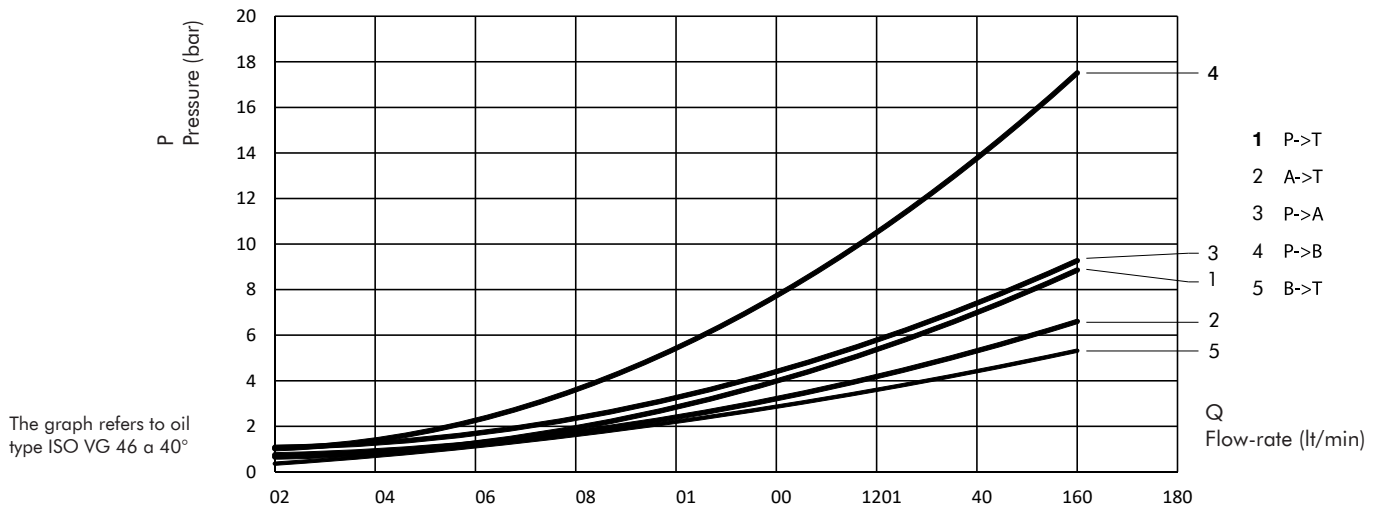
# TWIN TIPPING VALVE



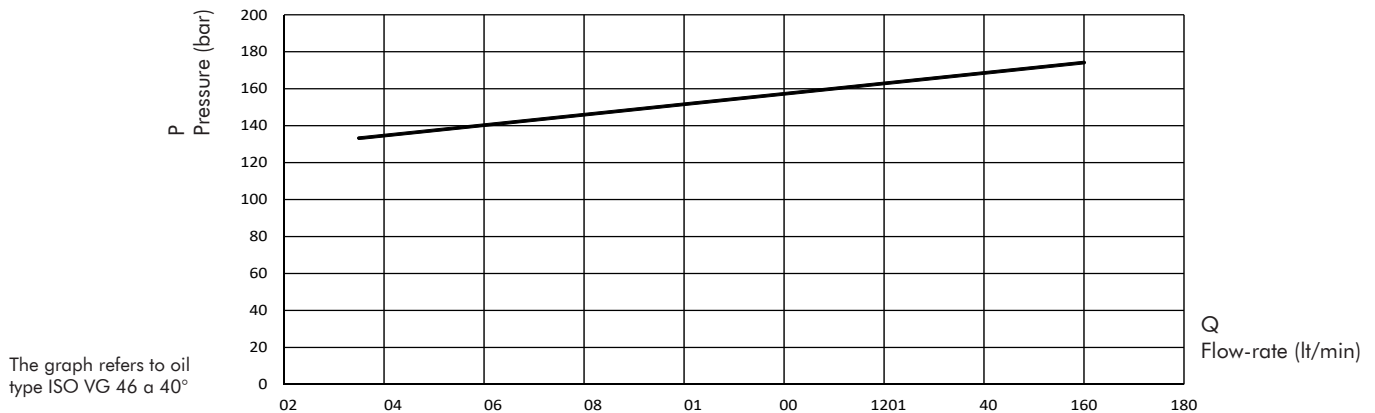
## 1" 160LPM Truck & Trailer Valve 121.15.113

TIPPING VALVE TYPE	ORDER CODE	PRESSURE VALUES (bar)		FLOW (L/MIN)
		STANDARD SETTING	MAX SETTING	
DM 160	121.15.113	140	260	160

### TIPPING VALVE PRESSURE DROP



### P-Q OPERATING CURVE FOR PRESSURE RELIEF VALVES



Specifications are subject to change without notice

10/11/23

**PHONE: 1300 300 375**

transporteng.com.au info@transporteng.com.au



MELBOURNE • SYDNEY • BRISBANE • PERTH • ADELAIDE